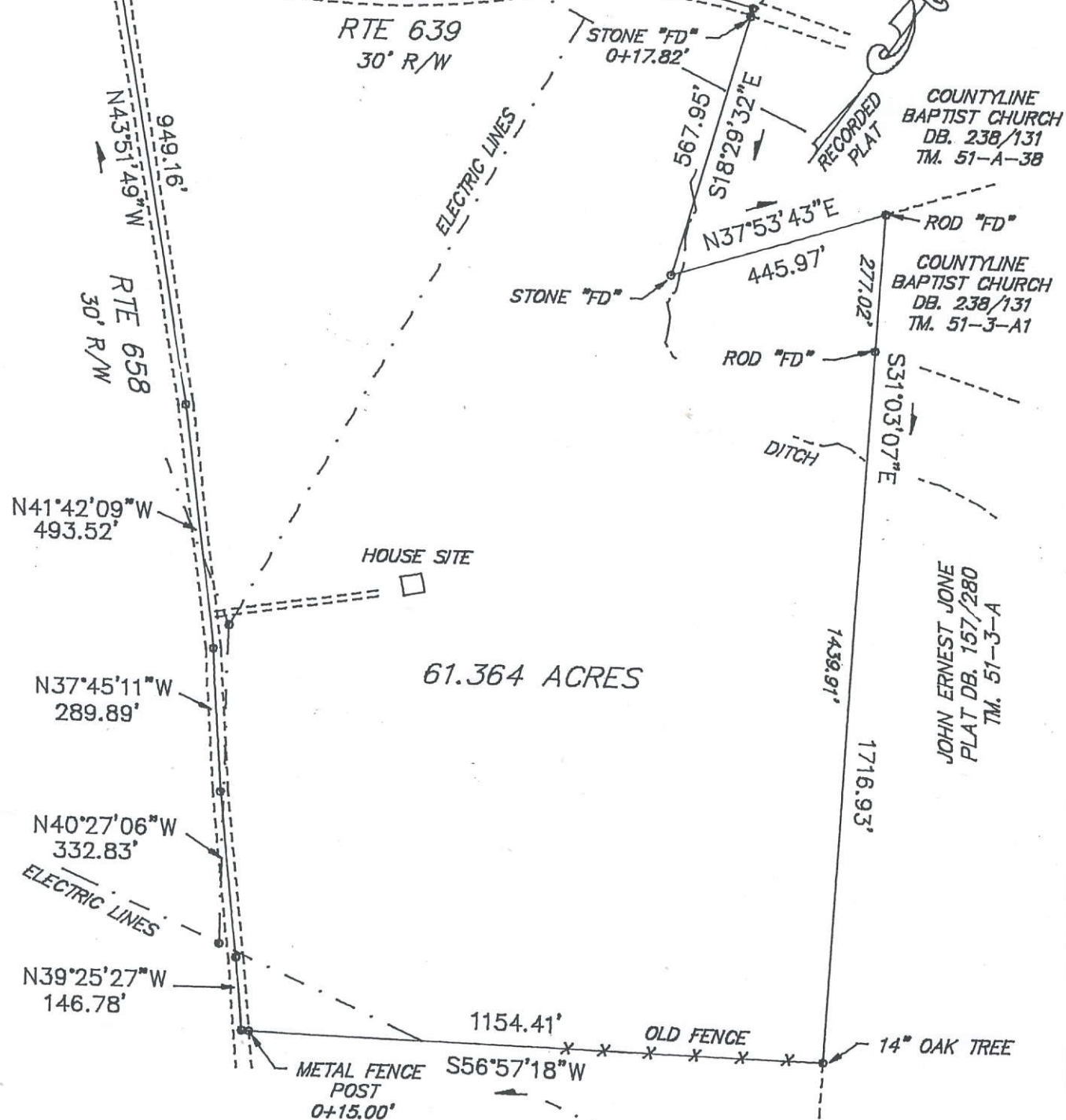


← TO CHILESBURG
ABOUT 0.3 MILE

$D = 32^{\circ}05'10''$
 $R = 1500.00'$
 $L = 840.01'$
 $CB = N60^{\circ}30'17''E$
 $CL = 829.08'$

$D = 28^{\circ}31'38''$
 $R = 900.00'$
 $L = 448.11'$
 $CB = N58^{\circ}43'32''E$
 $CL = 443.49'$



61.364 ACRES

RONALD K. & ANNETTE
 WISNIEWSKI
 PLAT DB. 165/204
 TM. 66-A-2



NOTES:

1. LAND LOCATED IN F.I.R.M. ZONE X PANEL # 510249 0150 B AUGUST 15, 1989
2. NO TITLE REPORT FURNISHED.
3. EASEMENTS MAY EXIST THAT ARE NOT SHOWN.
4. THIS IS A FIELD SURVEY.

PLAT OF 61.364 ACRES
 LOCATED ABOUT 0.5 MILES S.E.
 OF CHILESBURG ON RTE 639
 SURVEYED FOR
 JIM OLIFF
 DECEMBER 16, 1991

ACCURATE
 LAND SURVEYING COMPANY
 Phone: (804)448-4655
 (804)798-4728
 Ladysmith, Va. 22501

DD#127-7

PLAT# L-1242	DISTRICT: MADISON		COUNTY: CAROLINE	STATE: VA.
	SEC.# 66-A-1	REF: DB. 379/824		SCALE 1" = 300'
	F.B.# 67-P.44-47	CHECKED BY: .		DRAWN BY: RST